



---

## THE D8ABLE PERSONALITY, INTELLIGENCE, AND BEHAVIOR TEST

NAME: \_\_\_\_\_

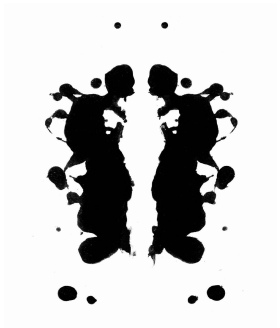
AGE: \_\_\_\_\_

RACE: \_\_\_\_\_

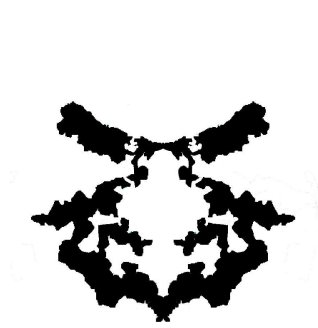
ADDRESS: \_\_\_\_\_

EMAIL: \_\_\_\_\_

WHAT DO YOU SEE?

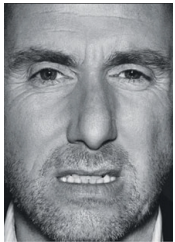


A. \_\_\_\_\_



B. \_\_\_\_\_

WHAT EXPRESSION TO DO YOU SEE:



A. \_\_\_\_\_



B. \_\_\_\_\_

WHAT IS YOUR FAVORITE COLOR? \_\_\_\_\_

**INSTRUCTIONS:**

1. BEFORE **EACH** WORD ON THE TEST BELOW, PLACE A NUMBER THAT BEST DESCRIBES YOU, 5 BEING MOST LIKE YOU AND 1 BEING LEAST LIKE YOU. TRY TO BE OBJECTIVE.
2. LOOK BELOW FOR INSTRUCTIONS ON SCORING ONLY AFTER COMPLETING THE TEST.

**CHOLERIC**

**PHLEGMATIC**

**MELANCHOLY**

**SANGUINE**

- \_\_ OPTIMISTIC
- \_\_ GOAL-ORIENTED
- \_\_ SELF-CONFIDENT
- \_\_ ACTIVIST
- \_\_ DOMINEERING
- \_\_ AGGRESSIVE
- \_\_ LEADERSHIP ABILITY
- \_\_ STICK-TO-IT-IVENESS
- \_\_ STRONG-WILLED
- \_\_ HOT-TEMPERED
- \_\_ INSENSITIVE
- \_\_ UNSYMPATHETIC
- \_\_ DETERMINED
- \_\_ DECISIVE
- \_\_ SARCASTIC
- \_\_ PRACTICAL
- \_\_ OUTGOING
- \_\_ SELF-SUFFICIENT

- \_\_ VERY QUIET
- \_\_ PESSIMISTIC
- \_\_ INTROVERT
- \_\_ NOT AGGRESSIVE
- \_\_ INDECISIVE
- \_\_ SLOW & LAZY
- \_\_ EASY GOING
- \_\_ CALM & COOL
- \_\_ EFFICIENT
- \_\_ DEPENDABLE
- \_\_ WITTY, DRY HUMOR
- \_\_ TEASES
- \_\_ SELFISH
- \_\_ ORDERLY HABITS
- \_\_ STINGY
- \_\_ STUBBORN
- \_\_ SPECTATOR IN LIFE
- \_\_ WORKS WELL UNDER PRESSURE

- \_\_ DEEP FEELING
- \_\_ SENSITIVE
- \_\_ SELF-CENTERED
- \_\_ EASILY OFFENDED
- \_\_ FAITHFUL FRIEND
- \_\_ SELF-SACRIFICING
- \_\_ LIKES BEHIND THE SCENES
- \_\_ SUSPICIOUS
- \_\_ INTROSPECTIVE
- \_\_ PERFECTIONIST
- \_\_ HARBORS RESENTMENT
- \_\_ CREATIVE
- \_\_ MOODY
- \_\_ CRITICAL
- \_\_ INDECISIVE
- \_\_ PESSIMISTIC
- \_\_ IDEALISTIC
- \_\_ INTROVERT

- \_\_ EMOTIONAL
- \_\_ DIFFICULTY KEEPING RESOLUTIONS
- \_\_ COMPASSIONATE
- \_\_ IMPRACTICAL
- \_\_ EASILY DISCOURAGED
- \_\_ UNDISCIPLINED
- \_\_ WEAK-WILLED
- \_\_ TALKATIVE
- \_\_ ENJOYABLE
- \_\_ FRIENDLY
- \_\_ RESTLESS
- \_\_ DIFFICULTY CONCENTRATING
- \_\_ LIVES IN PRESENT
- \_\_ EGTISTICAL
- \_\_ IMPULSIVE
- \_\_ DIFFICULTY WITH APPOINTMENT
- \_\_ OPTIMISTIC
- \_\_ OUTGOING

**TOTAL SCORES (TALLY THE NUMBERS ABOVE)**

	<b>CHOLERIC</b>	<b>PHLEGMATIC</b>	<b>MELANCHOLY</b>	<b>SANGUINE</b>
<b>SELF</b>	_____	_____	_____	_____